



Tinytag

Tinytag Data Loggers
Gathering Quality Data

Tinytag connect

temperature » relative humidity » voltage » current » count

**CENTRAL DATA MANAGEMENT FOR
TINYTAG RADIO AND LAN LOGGERS**

www.tinytag.info

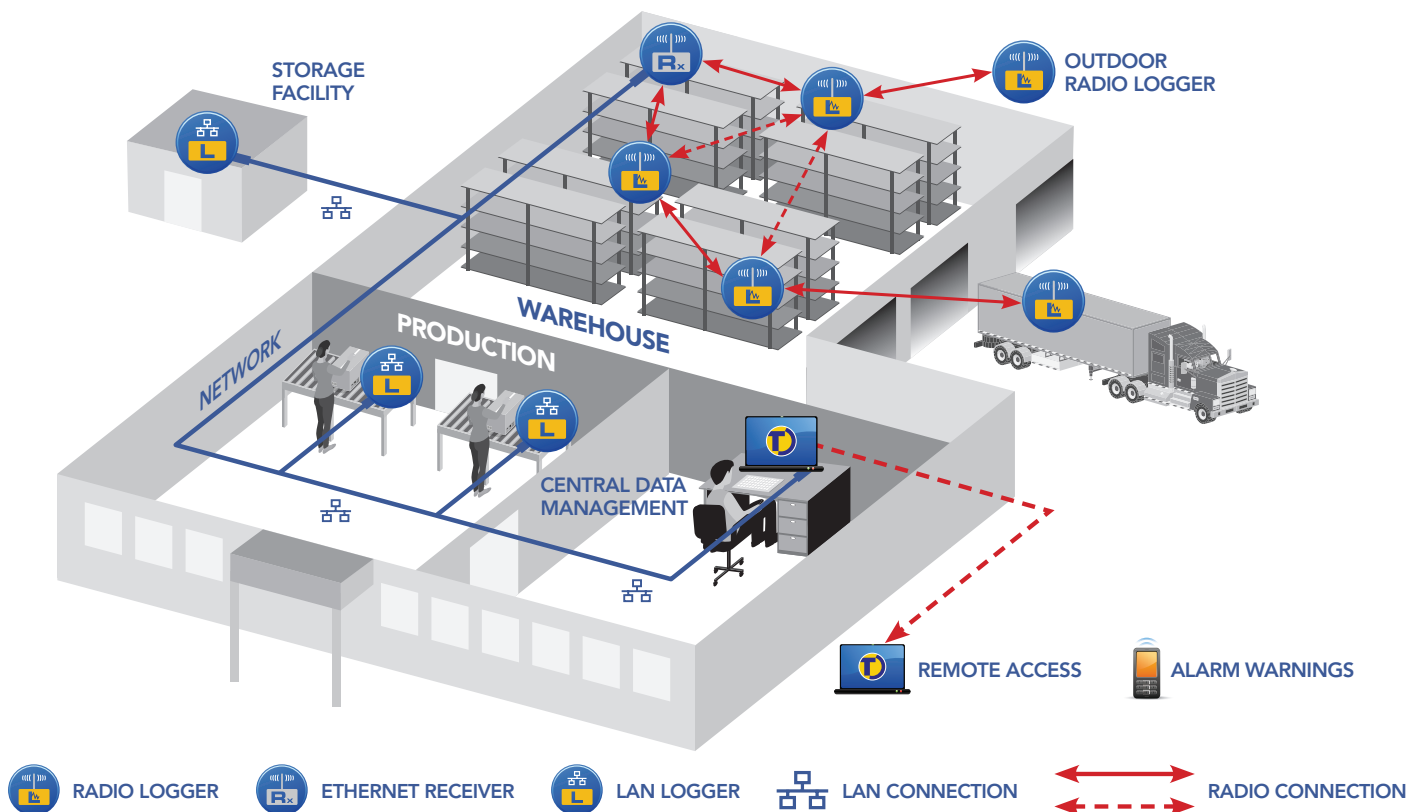
Tinytag Connect: Automatic Data Collection

temperature » relative humidity » voltage » current » count

Tinytag Connect is a central data management feature for Tinytag Ultra Radio, Plus Radio and LAN data loggers. It enables users on a network to have remote access to the data being recorded in their application from the convenience of their own desk. Data from multiple monitoring points can be easily accessed by any permitted user in a LAN, or remotely over the internet.

Remote Connectivity: Radio and Ethernet

Data from the loggers is collected automatically, and stored and managed by the Tinytag Connect Gateway – a browser interface which offers helpful diagnosis information. Data is then presented in the easy to use Tinytag Explorer Connect software.



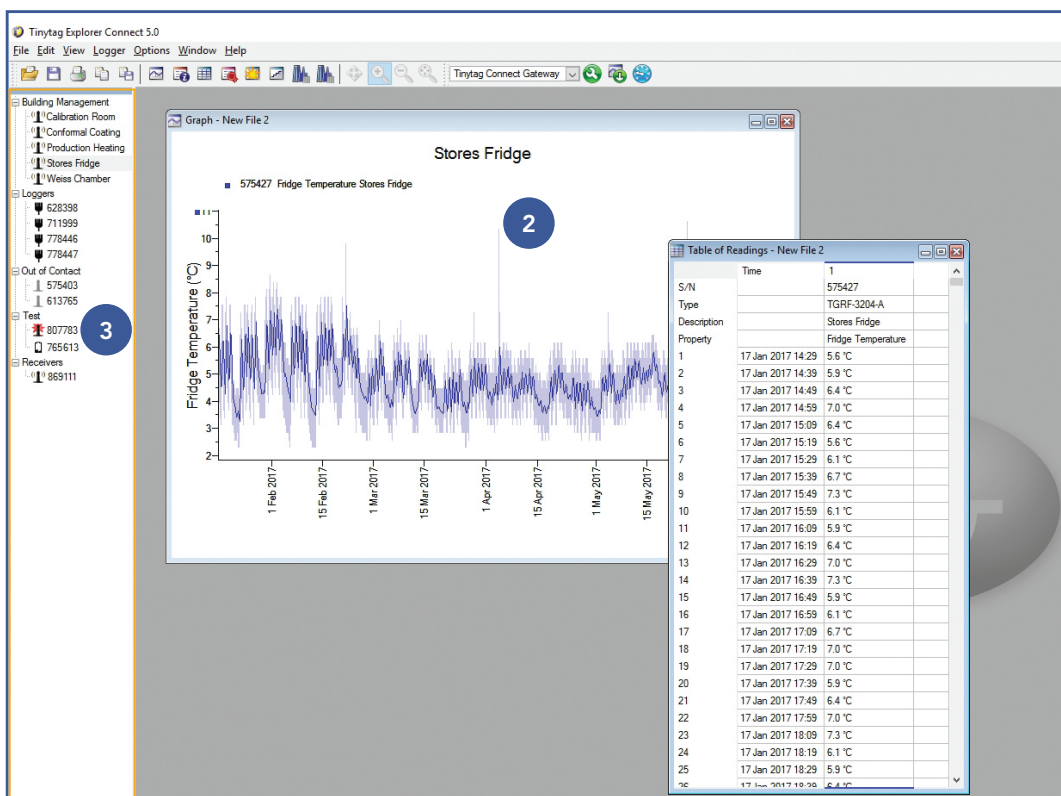
Tinytag Connect is designed for flexibility and ease of use: Radio and LAN data loggers can be mixed and matched within an application to meet particular site layout and infrastructure requirements. Monitoring parameters including temperature, RH, low voltage, current and count inputs; and a choice of indoor or outdoor radio units.

Tinytag Radio

Radio data loggers are easy to set up: installation can be done by the user and site surveys are rarely needed. Data loggers are located as required and self-configure to form a robust mesh network when turned on. Data is sent by wireless communications via a receiver to the computer running the system. In the event of problems such as a temporary power loss to this computer, loggers will record locally and then transmit their data when communications are restored. Radio loggers are battery powered (mains power is available if required) and can be easily moved or added as requirements change without concerns about removing wiring or manual system reconfiguration.

Tinytag Plus LAN

Plus LAN loggers plug into a network point and send their data directly to the Connect Gateway for viewing in Tinytag Explorer Connect software. They are ideal for applications where radio signals may be problematic due to network range or physical obstructions. For example, they are used in metal-lined walk in fridges/freezers or where a remote monitoring point is required outside the range of an existing Radio System, wherever a convenient network point is available. They are powered through their LAN connection using a plug-in Power over Ethernet (PoE) adaptor and have battery back-up for reliability if this should fail.



- 1

A viewing pane presents a global view of the system with icons showing the status of each logger.

➤

During set up loggers can be labelled and grouped, logging intervals selected and alarm settings defined.

- 2

Multiple devices can be configured and downloaded simultaneously, and information displayed as a graph overlay or table of readings which can then be exported to Excel or other popular software packages.

➤

Data can be exported from the system using a read-only Modbus interface or in csv files over an http protocol.

- 3

Alarm conditions and low battery warnings are shown as a visual alert in the viewing pane.

➤

Alarm notifications are generated if conditions fall outside user-defined limits. These can be sent to selected email addresses, and e-mail warnings in turn can be used to send SMS messages using third party messaging services.

Tinytag Connect provides peace of mind in terms of data integrity, safely recording and storing data without interruption – both radio and LAN loggers keep recording if there is a problem with communications to the Gateway, and transmit their data when the connection is restored. It is recommended that Connect Gateway is run on a server as they are typically secure, unlikely to be switched off accidentally, and are regularly backed up.

Tinytag Desktop Viewer

Tinytag Desktop Viewer software is a useful option for users running a Connect Radio/LAN data logging system. Desktop Viewer is a read-only tool which provides a visual representation of the status of a Connect system, displaying the data being recorded by the loggers and showing alerts when any are out of contact.

Desktop Viewer is helpful for customers who need to set different levels of user access for operational or quality control reasons. It allows designated users to view data without full access to certain settings that could inadvertently result in unauthorised changes.

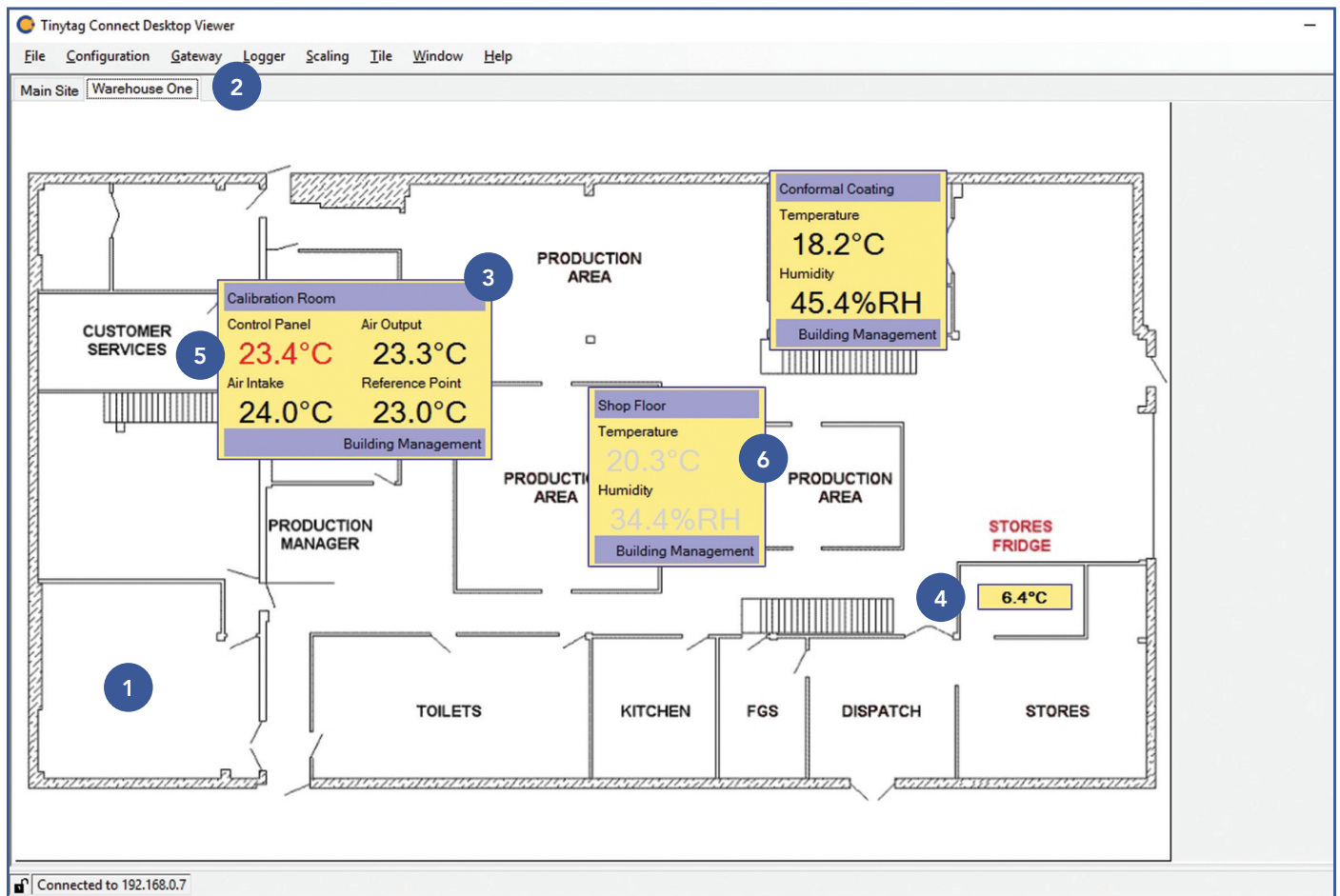
The alarms set in the tool are independent of those set in Tinytag Explorer Connect software so the original configuration will remain unchanged. The data displayed refreshes automatically.

- Read only software tool
- Clear visual representation of data logger status
- No access to Connect system configuration/set-up
- Customise background with floorplans/images
- Visual alarm display

How Desktop Viewer Works

Users can display tiles (windows displaying logger information) on the Viewer screen showing the readings of selected data loggers. The tiles can be moved and positioned as required. There is an option to set a background, by uploading a floorplan or an image for example, to allow the tiles to be placed where the loggers are recording to give a visual representation of what is happening. For large sites, or sites with a large number of data loggers, multiple tabs can be used to show different sections or groups of loggers.

An example of a Desktop Viewer display is shown below:



- 1 Background
- 2 Tabs to different views
- 3 Full Tile; showing logger title, channel and group names
- 4 Channel Tile; showing reading only
- 5 Alarm warning
- 6 Logger out of contact

Desktop Viewer can be configured to suit the needs of each user, and configurations can be exported/imported and applied to Viewers on other computers or logins.

- Radio and Ethernet connectivity
- Automatic data collection
- Remote data access via a LAN
- Global system view with Tinytag Explorer Connect software
- Robust data communications
- Easy to use and flexible

Gemini Data Loggers (UK) Ltd

Scientific House, Terminus Road, Chichester,
West Sussex, PO19 8UJ, England

Telephone: +44 (0)1243 813000

Email: info@tinytag.info

www.geminidataloggers.com

www.tinytag.info

Gemini
DATA LOGGERS